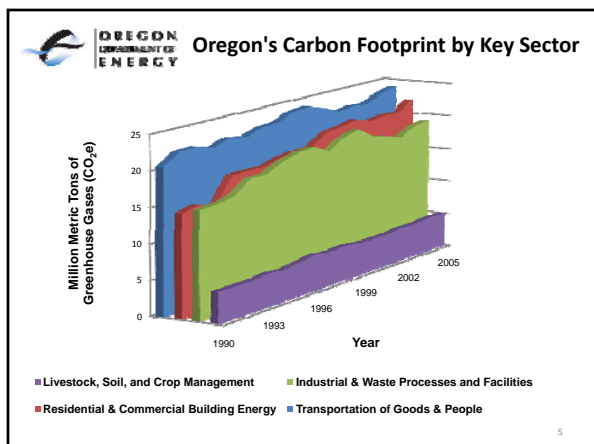
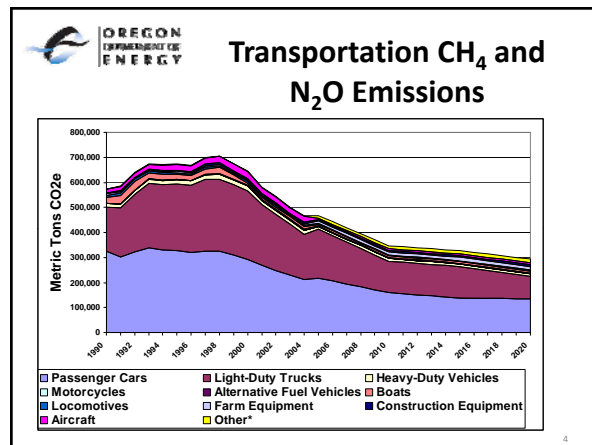
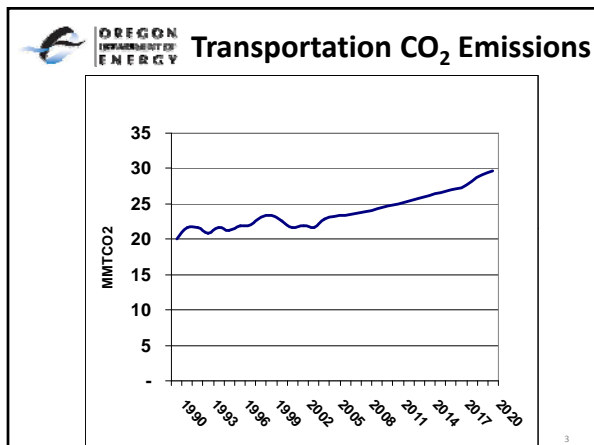
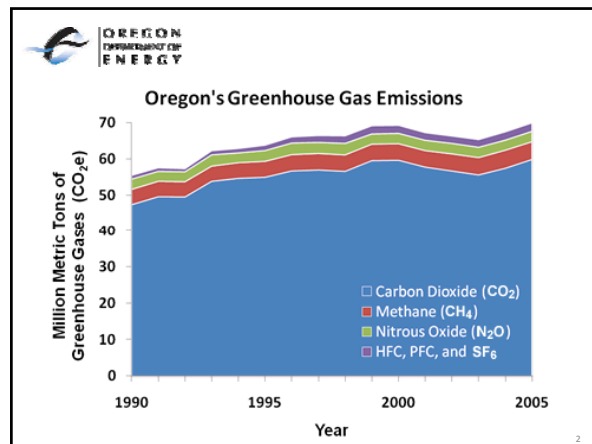


**OREGON DEPARTMENT OF ENERGY**

## Oregon Greenhouse Gas Emissions: Context for Transport & Land Use Actions

Bill Drumheller  
May 13, 2010  
APA/OR 2010 Planning Conference



- OREGON DEPARTMENT OF ENERGY**
- ### Early Oregon Climate Change Milestones
- **2001** – State forest's carbon offsets law passed.
  - **1997** - Oregon first state to regulate CO<sub>2</sub> emissions (EFSC rule for new power plants).
  - **1995** – Comprehensive *Report on Reducing Oregon's Greenhouse Gas Emissions* submitted.
  - **1992** - Oregon adopts a benchmark to hold carbon dioxide emissions to 1990 levels.
  - **1990** – Governor Goldschmidt's *Oregon Task Force on Global Warming* submits its Report.



### Governor's Advisory Group on Global Warming


*Oregon Strategy for Greenhouse Gas Reductions*  
Governor's Advisory Group On Global Warming



State of Oregon, December 2004


- Appointed by the Governor in early 2004.
- Unanimously adopted *Oregon Strategy for Greenhouse Gas Reductions* in December 2004.
- Report transmitted to Governor in March of 2005.

7




### Climate Change Integration Group


- Create Oregon preparation & adaptation strategy.
- Implement and monitor mitigation measures from *Oregon Strategy* (devise new ones as appropriate).
- Serve as a clearinghouse for Oregon climate change information and conduct public education.
- Explore research areas for Oregon's universities.



The Governor's Climate Change Integration Group  
Final Report to the Governor  
A Framework for Addressing Rapid Climate Change  
State of Oregon, January 2008



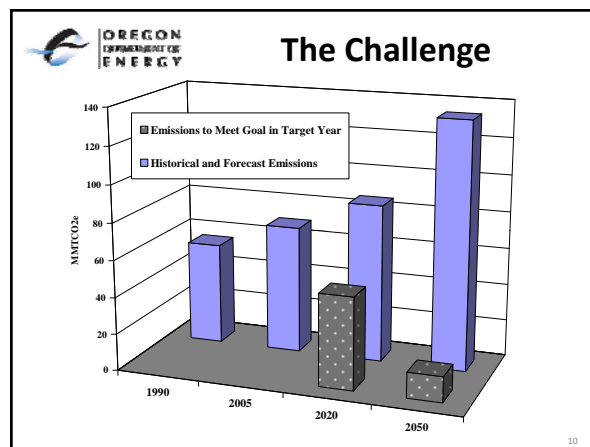

8



### HB 3543 Legislation

- Oregon greenhouse gas emission **goals** put into state law in the 2007 session.
  - Arrest growth of emissions by 2010.
  - 10 percent below 1990 levels by 2020.
  - 75 percent below 1990 levels by 2050.
- Also created the Global Warming Commission and the Oregon Climate Change Research Institute.
- Focuses on both mitigation and adaptation.


9

### Renewable Portfolio Standard (RPS)

- RPS passed in 2007 Session requires that 25% of the electricity supplied by the largest utilities in 2025 be renewable.
- Obligation ramps up over time.
- Smaller utilities have lesser obligation (5 or 10 percent) that starts in 2025.
- Estimated annual ghg reduction of 7 million metric tons by 2025 from RPS obligation.

11



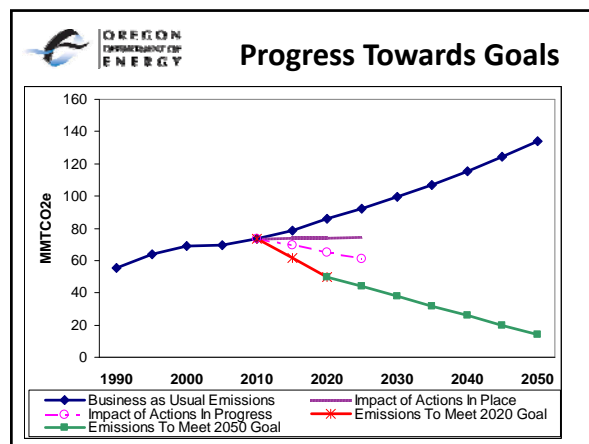
### California "Clean Car" Tailpipe Standards

- CAA allows states to "opt in" to CA's clean car tailpipe emission standards.
- Adopted by 14 states, including OR in 2005.
- Estimated annual ghg reduction of greater than 6 million metric tons in 2025.
- In 2010 the CA clean car standards became national fuel economy standards through negotiations. By model year 2016, vehicles must get an average of 35.5 miles per gallon.

12

**Other Key Actions from 2004 Oregon Strategy**

- Appliance efficiency standards.
- Residential building code Improvement of roughly 15 percent (now in place).
- Biofuels legislative package (RFS).
- Various renewable energy incentives.
- A variety of energy efficiency measures.
- Combined ghg emission reductions on the order of 4 ¾ million metric tons by 2025.



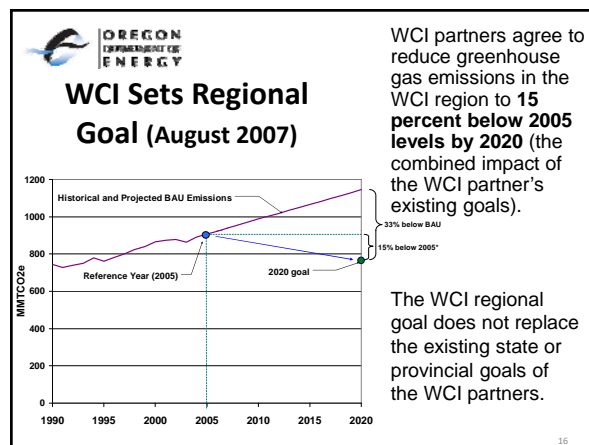
**Regional Action: Western Climate Initiative**

Feb. 2007 –Original MOU signed by Governors of AZ, CA, NM, OR & WA.

Three specific directives:

- Set a regional emissions reduction goal.
- Join a multi-state registry to track, manage and credit reductions.
- Design a regional multi-sector market-based mechanism (i.e., cap-and-trade).

Joint work to promote renewable energy, increase energy efficiency, advocate for national climate policies in the WCI region's interest, and identify climate change adaptation measures.



**WCI Moving Toward Meeting Regional Goal**

- Roughly 2/3 of the emissions in the WCI region are committed to moving forward with cap-and-trade in 2012 (CA, BC, ON, QC, NM) through existing law or regulatory authority.
- WCI Partners have amplified efforts on complementary policies (e.g., LCFS). Note that clean cars was integral to WCI from the start.
- Increasing emphasis on influencing and shaping federal legislation in DC and Ottawa.

**Summary**

- Transportation sector emissions largest in Oregon.
- Policies put into place in Oregon will ensure that 2010 goal is met, but lacking policies to meet 2020 goal and regional commitment.
- Big transportation sector reductions have to be found.
- Don't be scared .... Real solutions are out there!



## More Information

- **Oregon Climate Change Portal**  
<http://www.orclimatechange.gov>
- **Oregon Global Warming Commission**  
[www.keeporegoncool.org](http://www.keeporegoncool.org)
- **Western Climate Initiative**  
<http://www.westernclimateinitiative.org>

Bill Drumheller, Oregon Department of Energy  
(503) 378-4035 or [Bill.Drumheller@state.or.us](mailto:Bill.Drumheller@state.or.us)

19