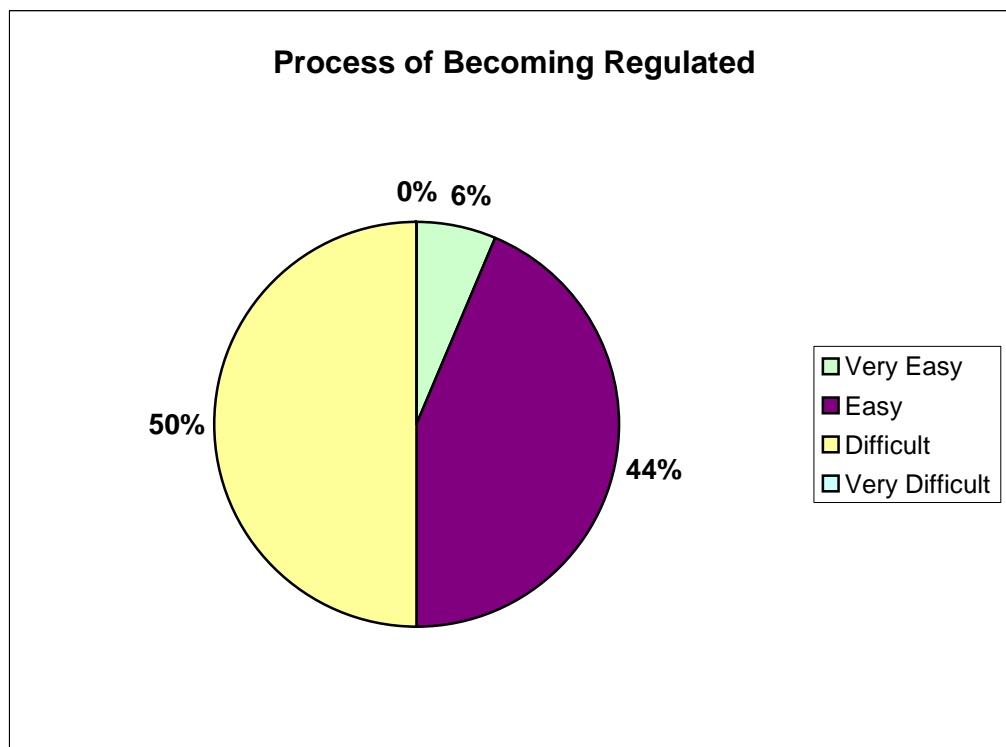
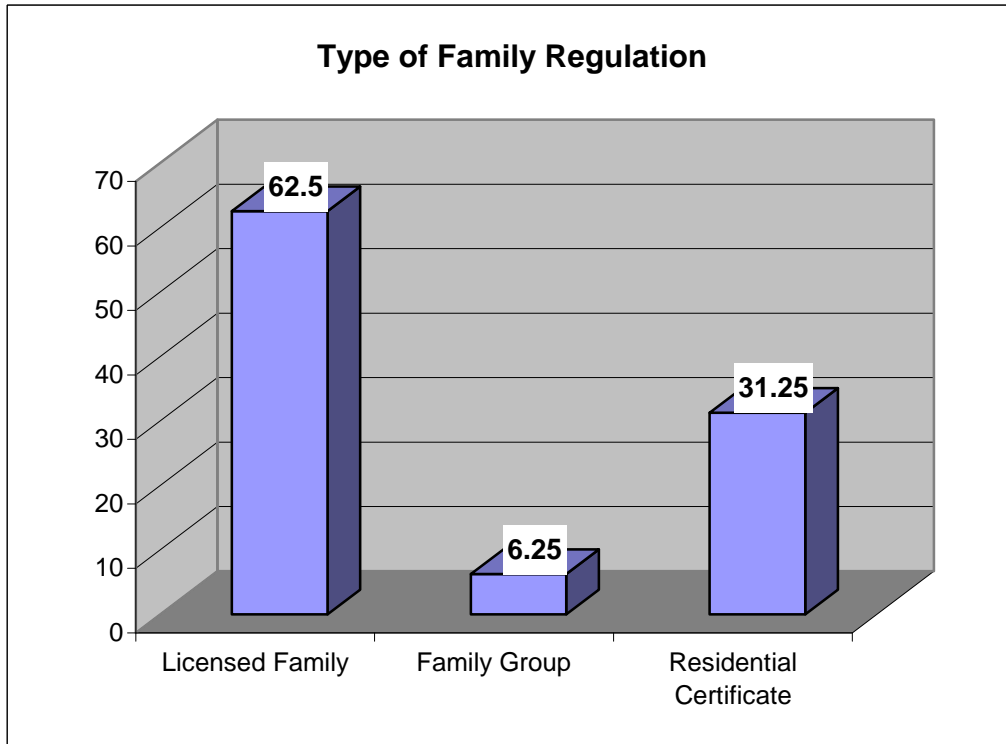
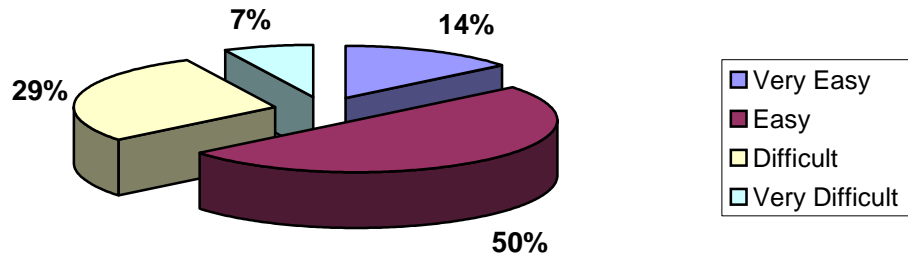


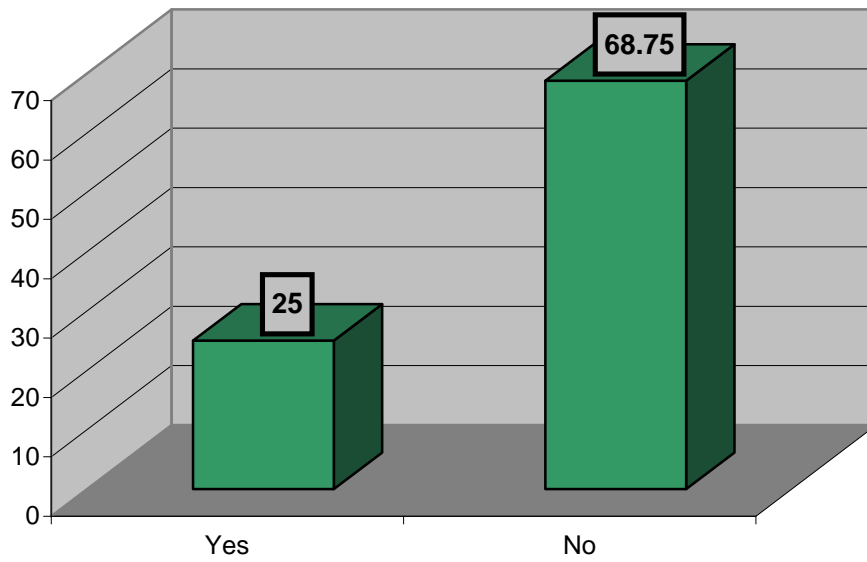
## The Recruitment & Retention Department



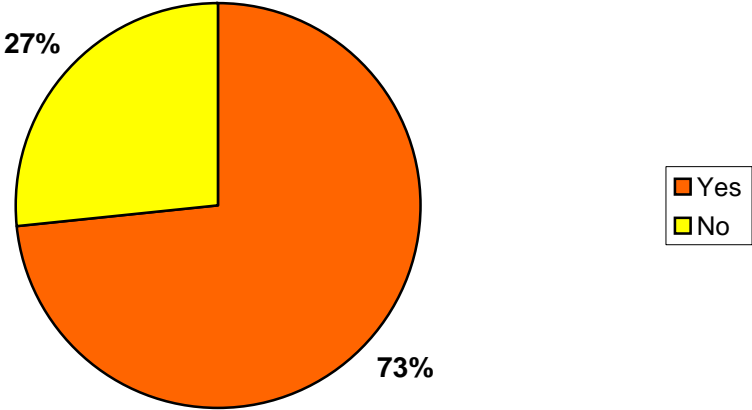
### Process of Obtaining A City Business License



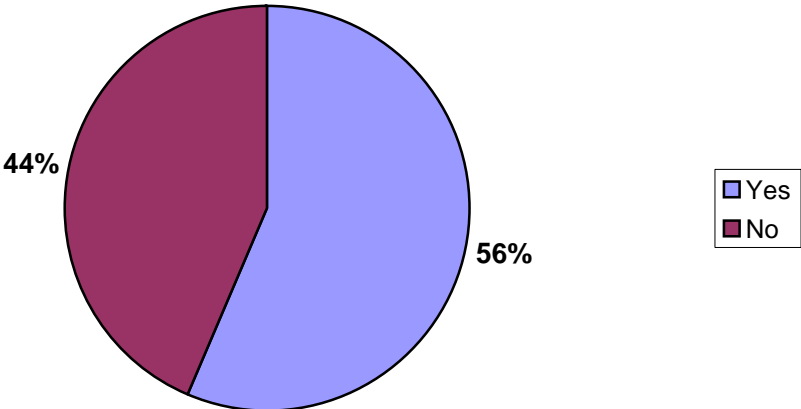
### Does Your City Limit the Number of Children You Can Care For?



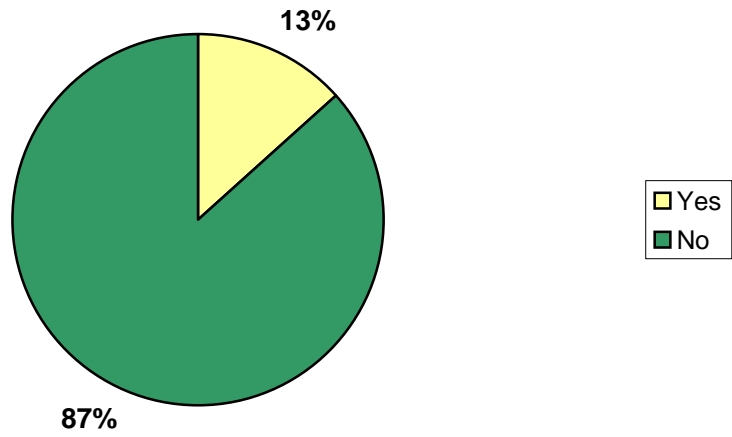
**Do You Belong To A Food Program?**



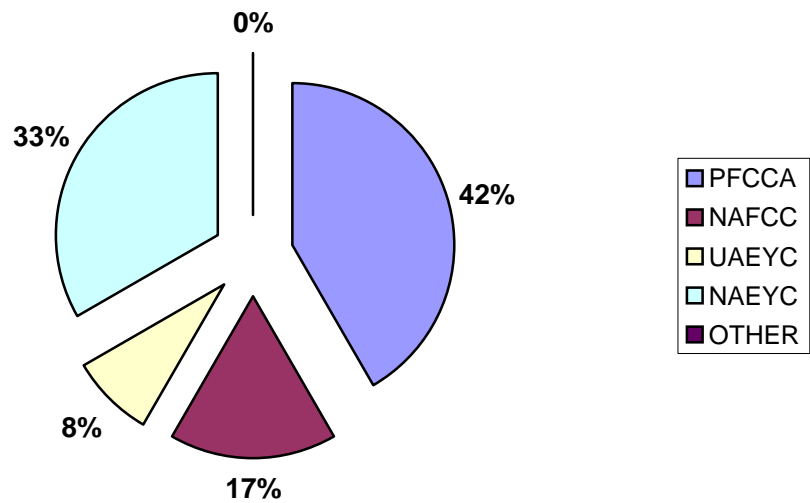
**Do You Care For Children On State Subsidy?**

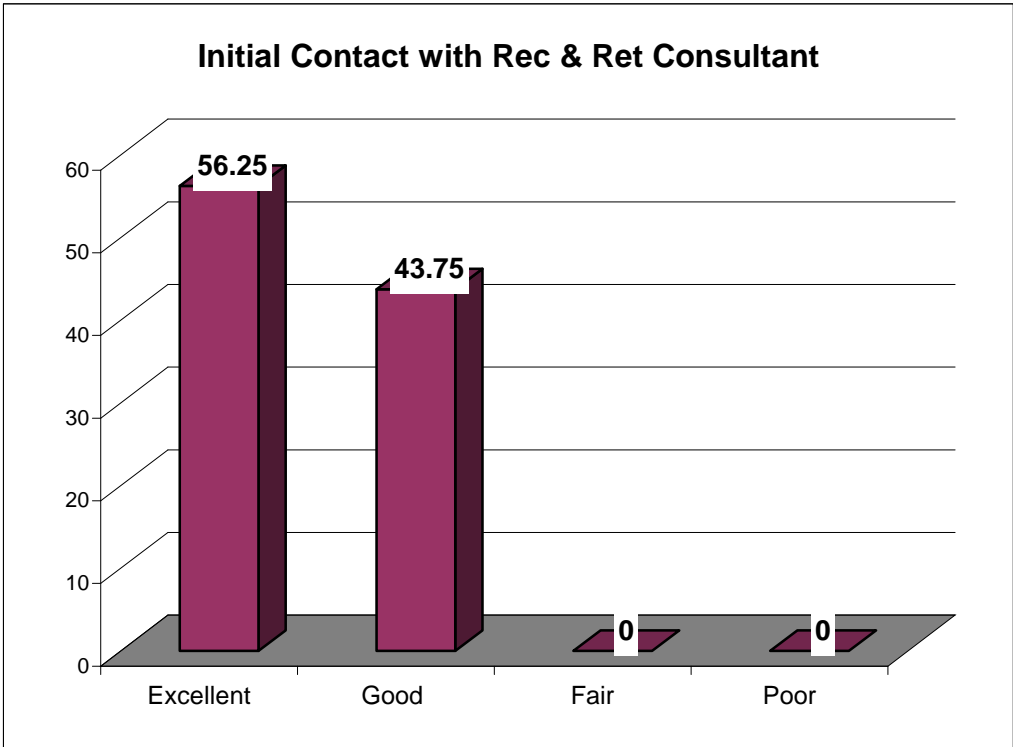
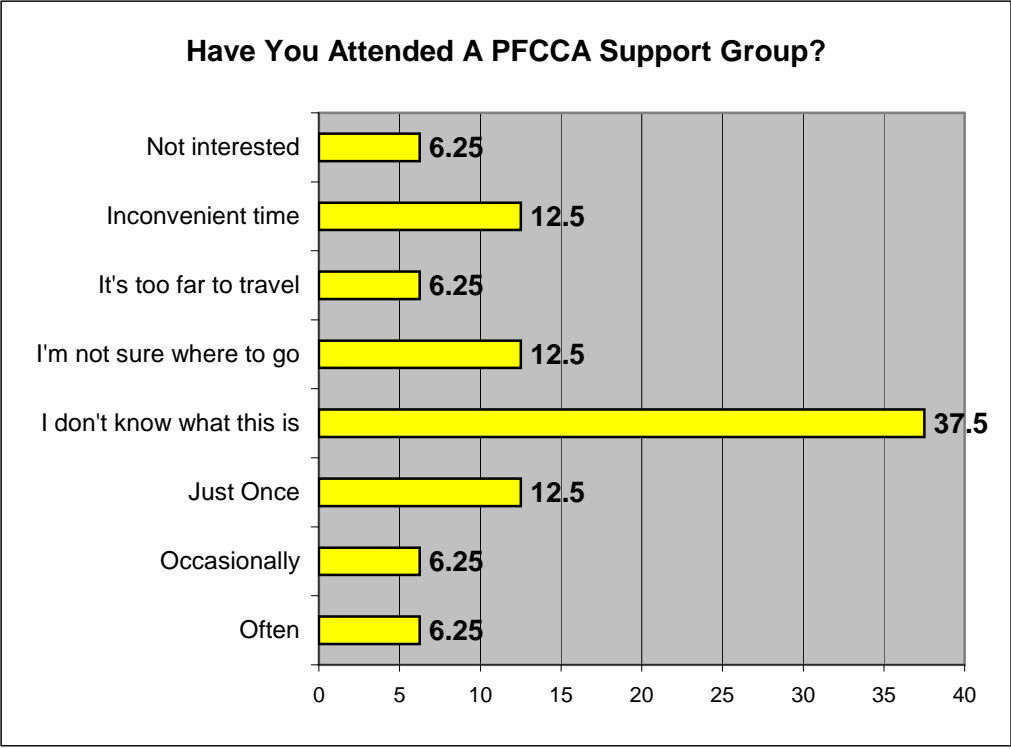


### Do You Care For Children Funded Through An Employer?

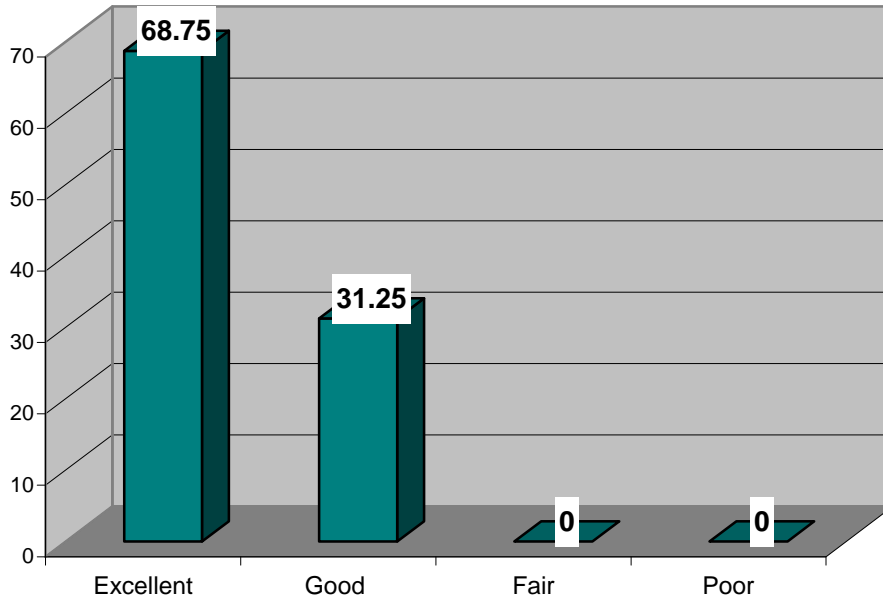


### Are You A Member Of A Professional Organization?

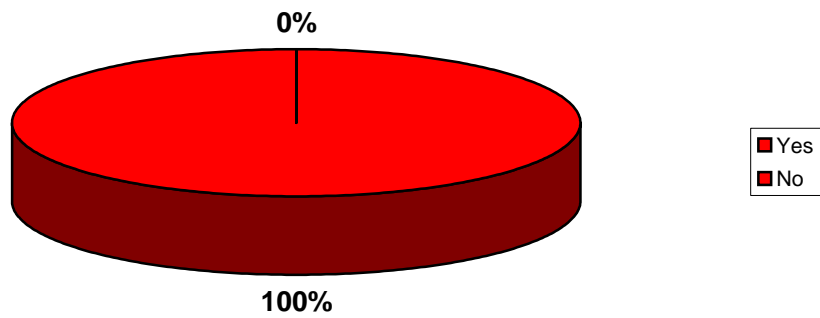




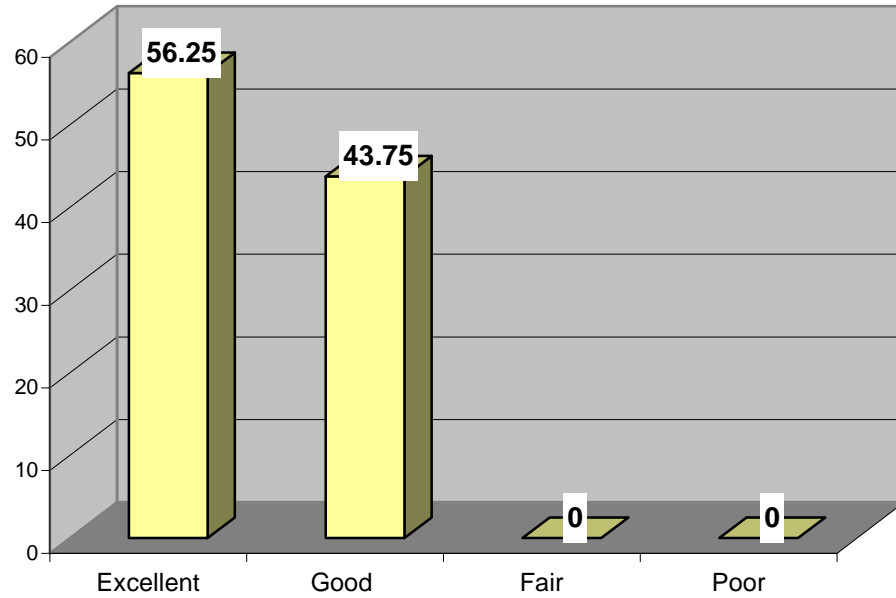
### Rec & Ret Consultant's Knowledge of the Program



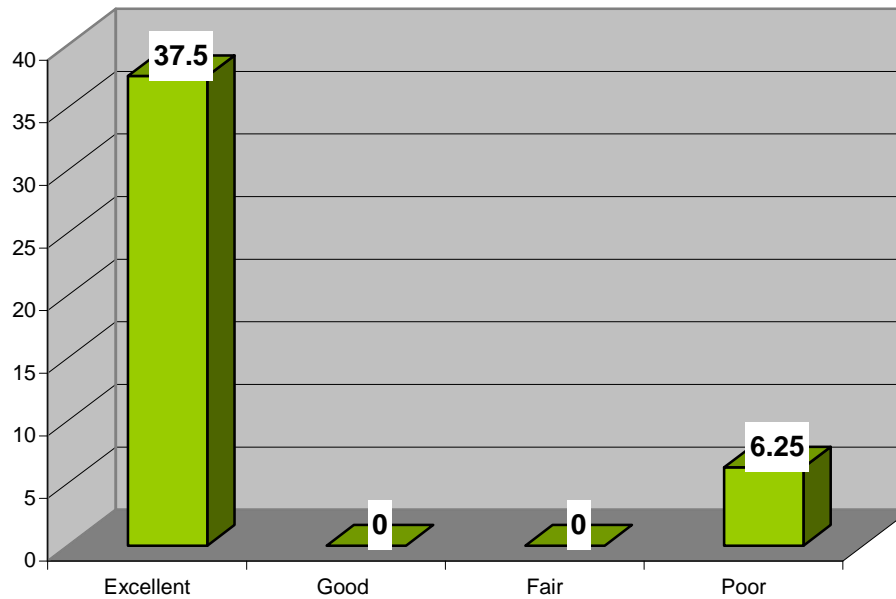
### Did the Rec & Ret Consultant Answer All Your Questions?

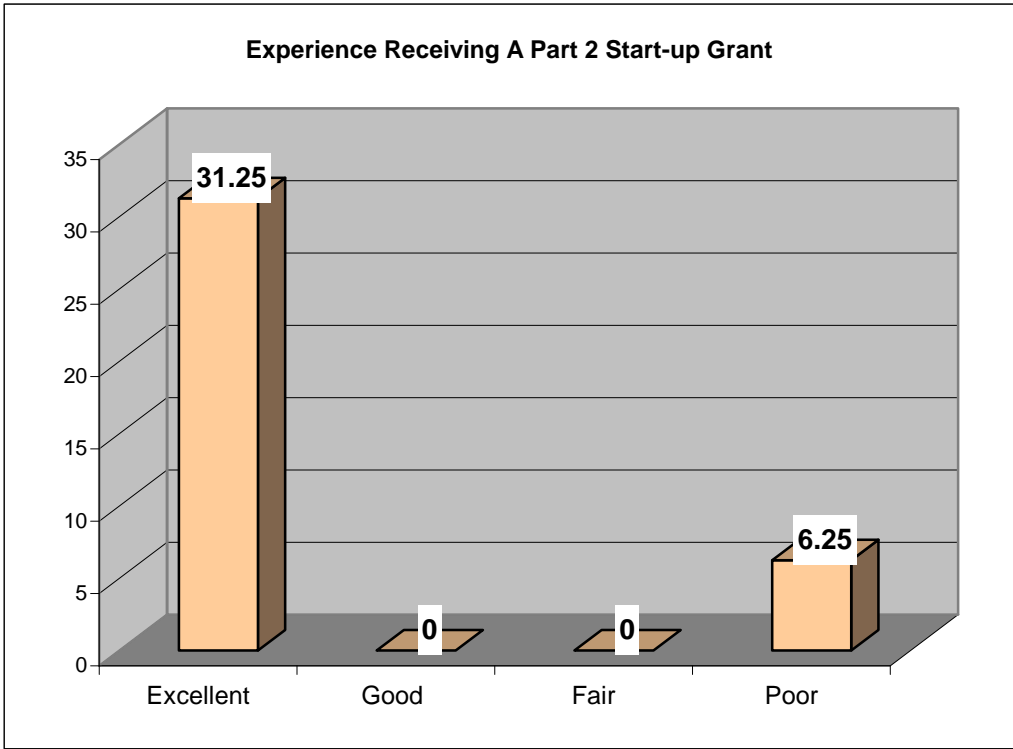
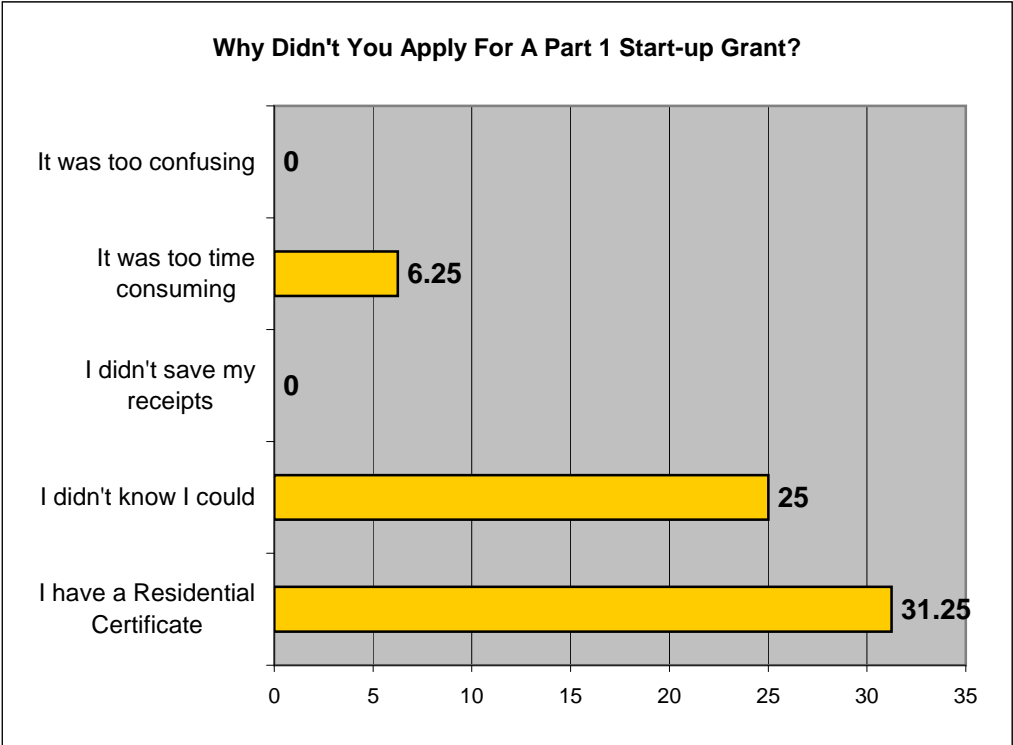


### The Assistance Received During the First Year

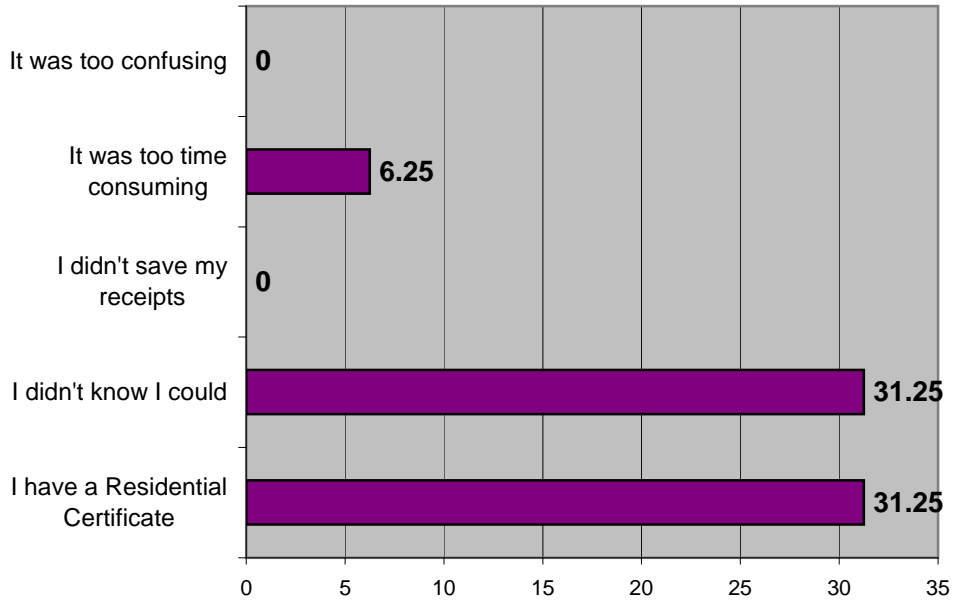


### Experience Receiving A Part 1 Start-up Grant

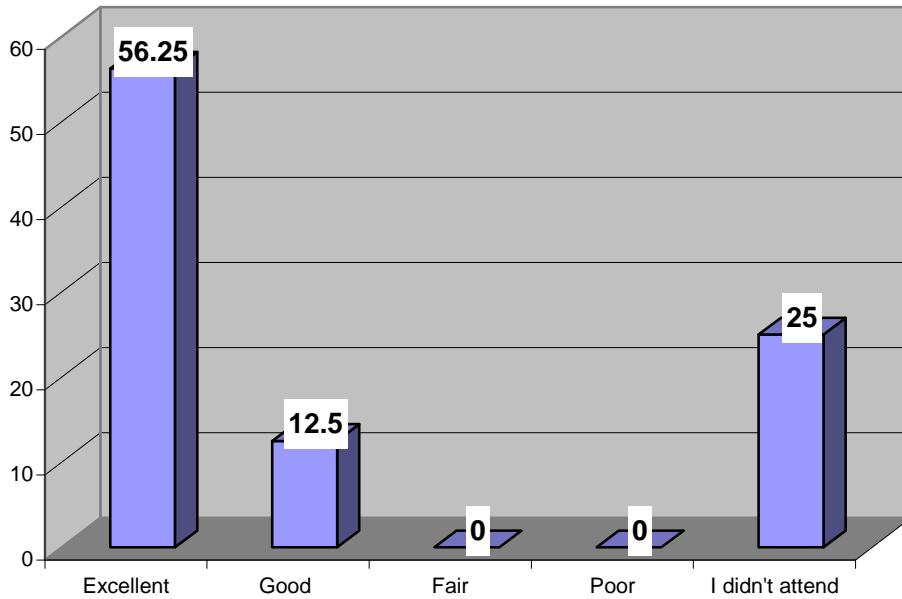




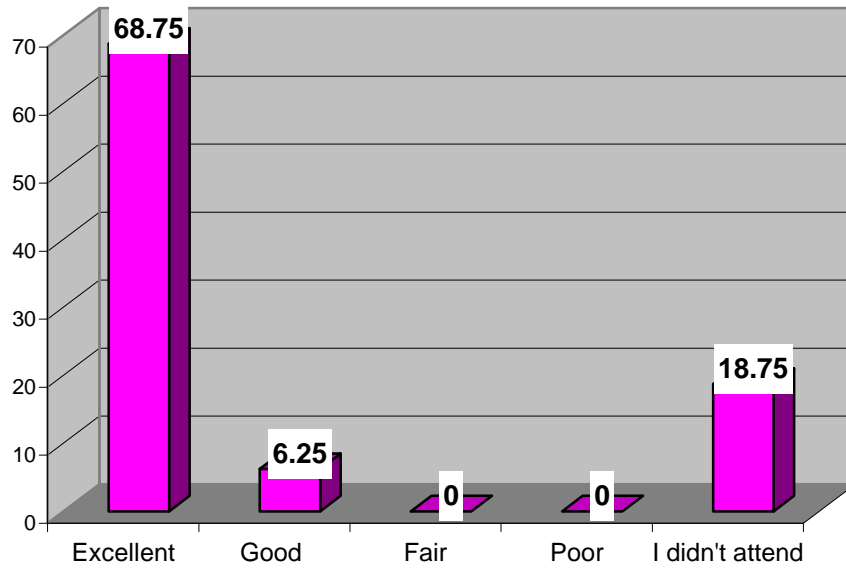
### Why Didn't You Apply For A Part 2 Start-up Grant?



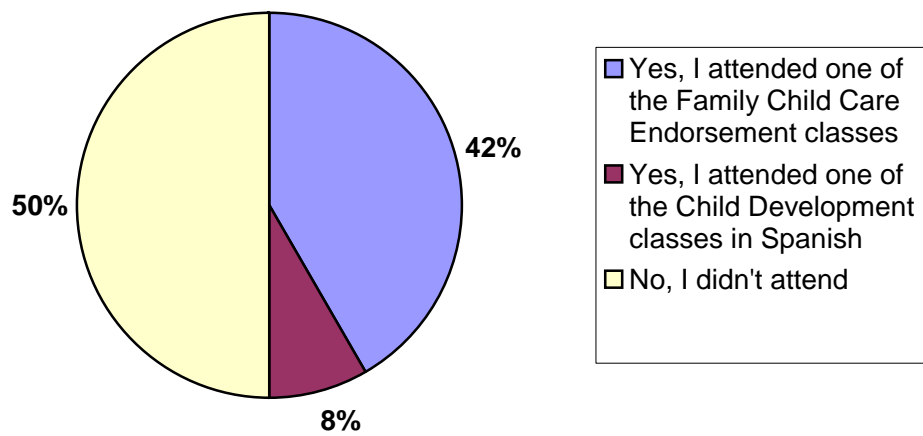
### Experience With New Provider Orientation



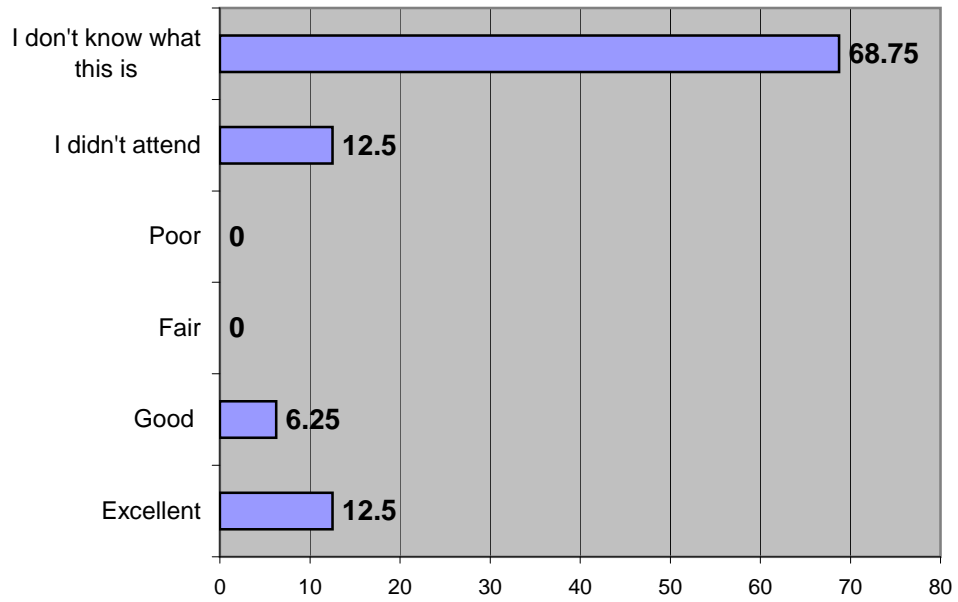
### Experience With TARGET



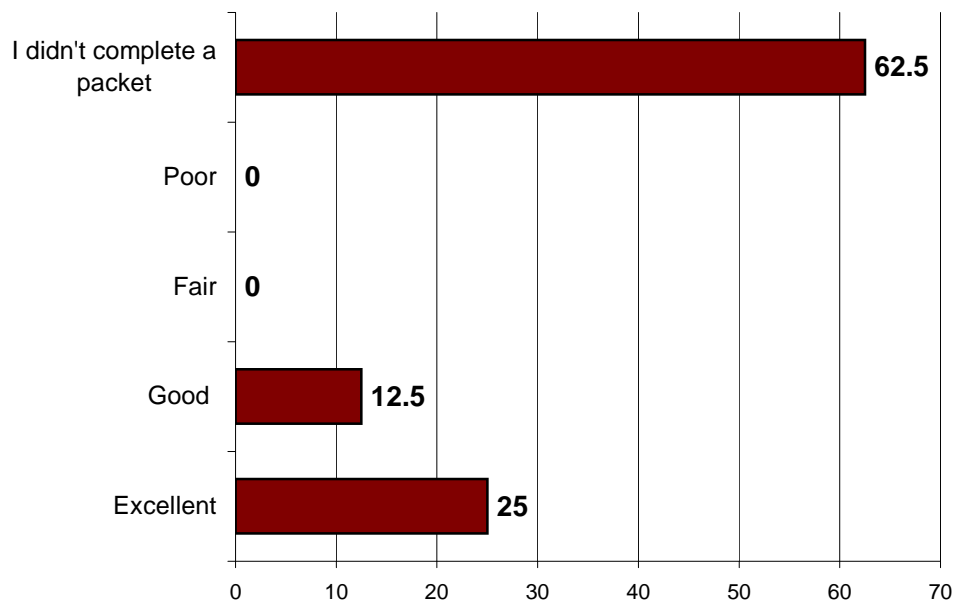
### Did You Use The TARGET Voucher?



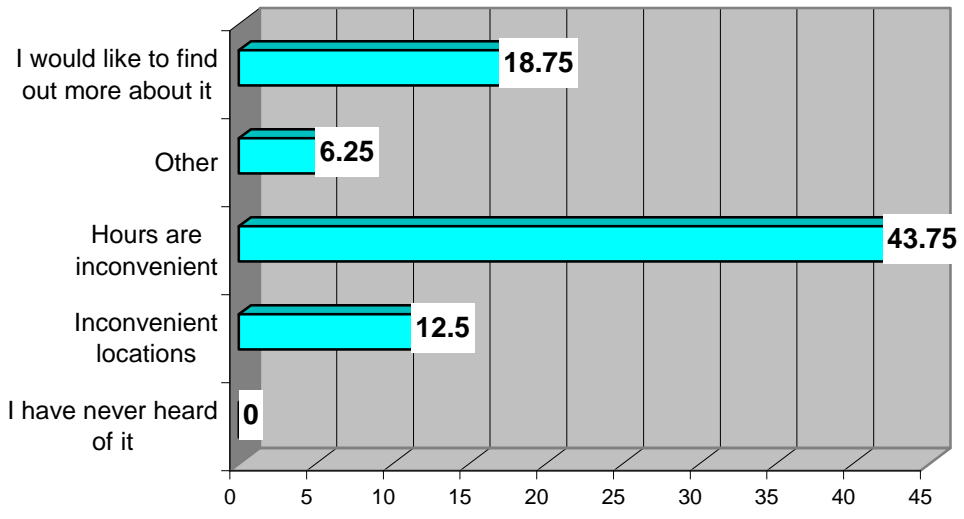
### Experience With Exploring Creative Curriculum



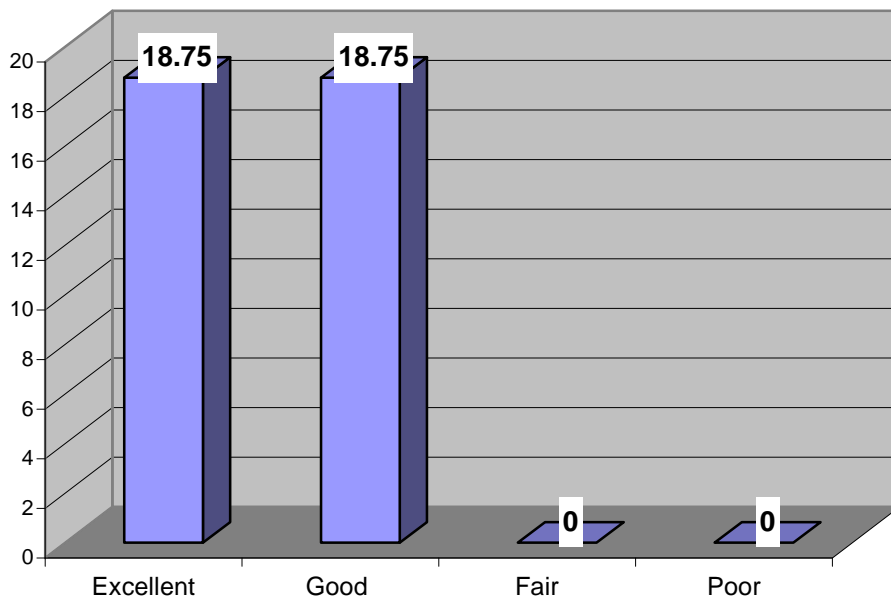
### Experience With RC Training Packet

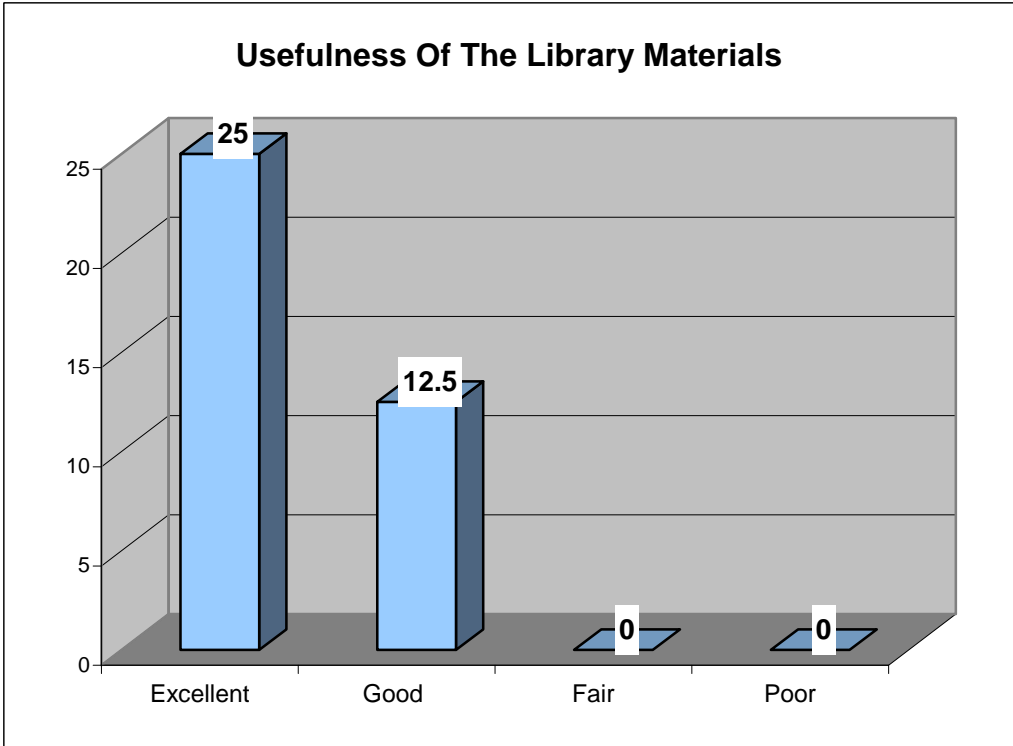


### Why Are You Not a Member Of The Lending Library?



### Telephone Contact With Library Specialist

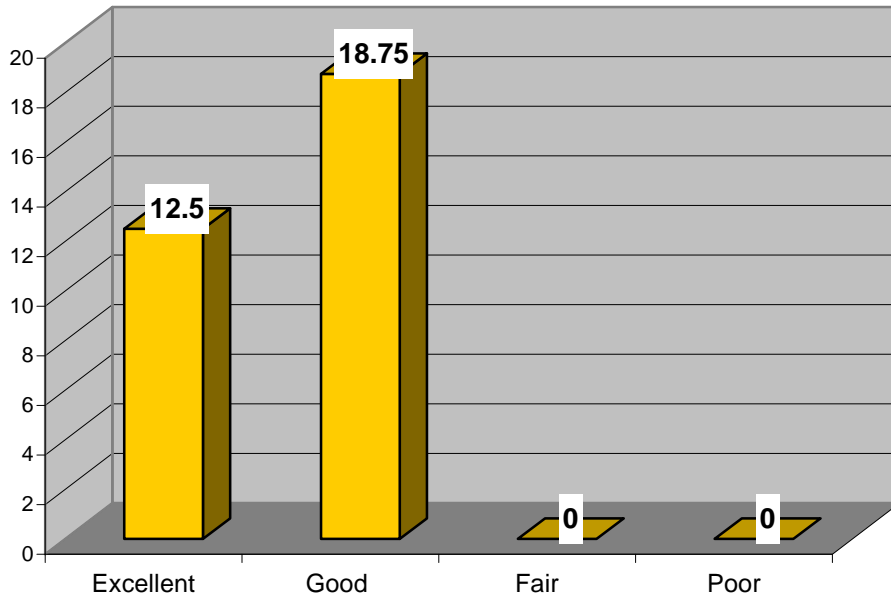


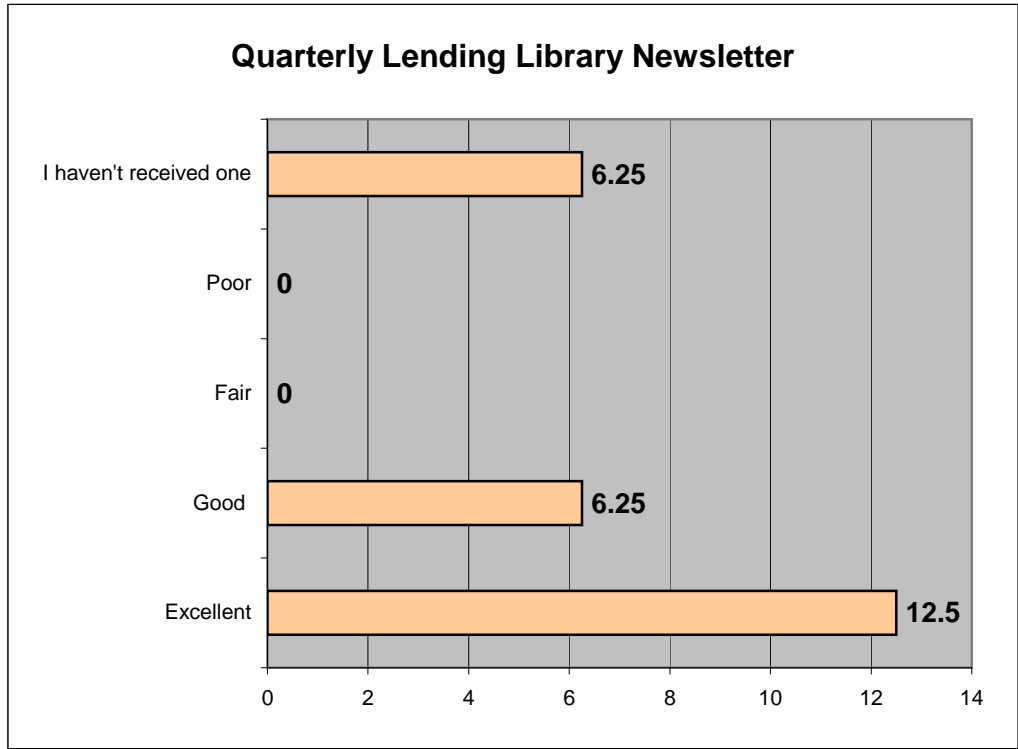
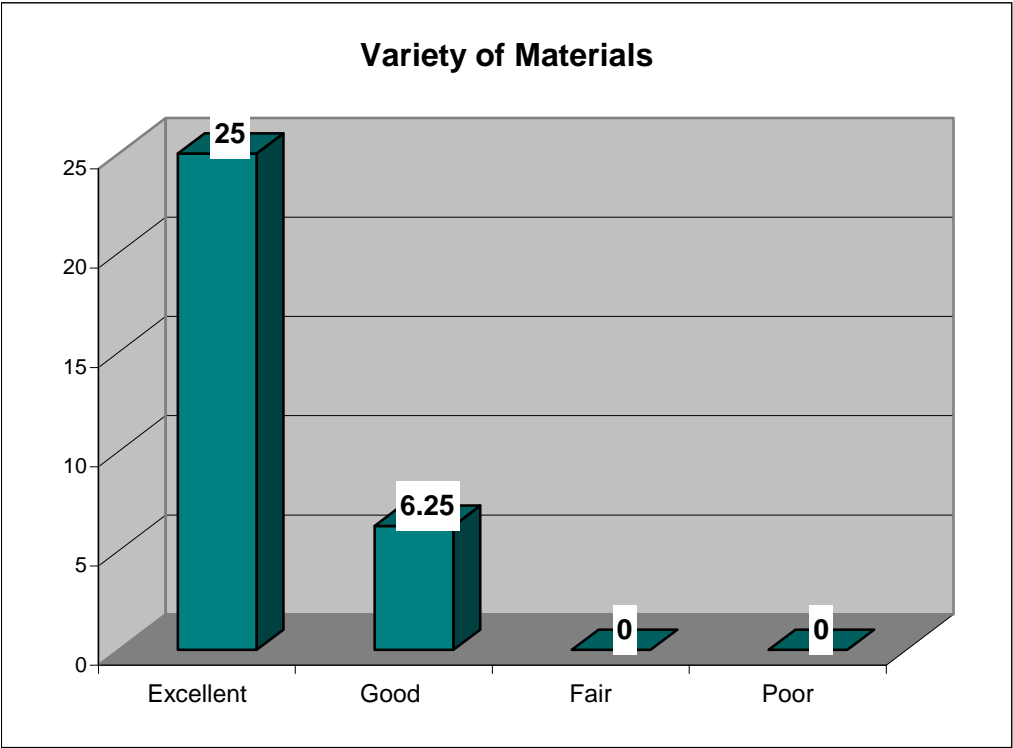


### Accessibility Of The Materials



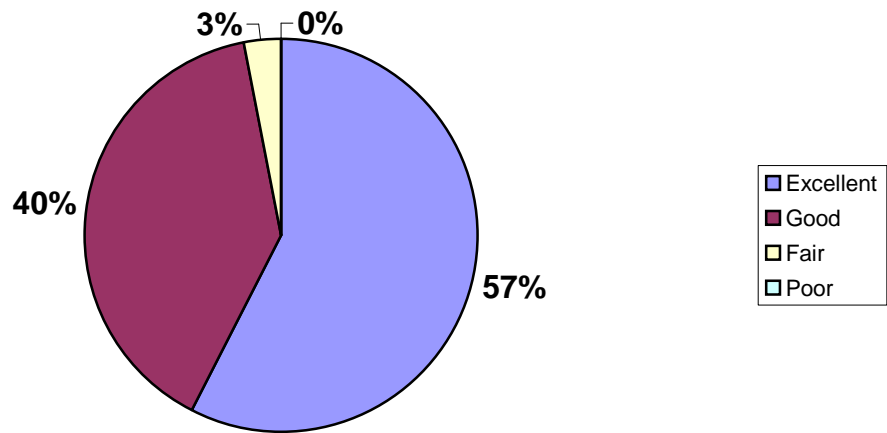
### Condition Of The Library Materials



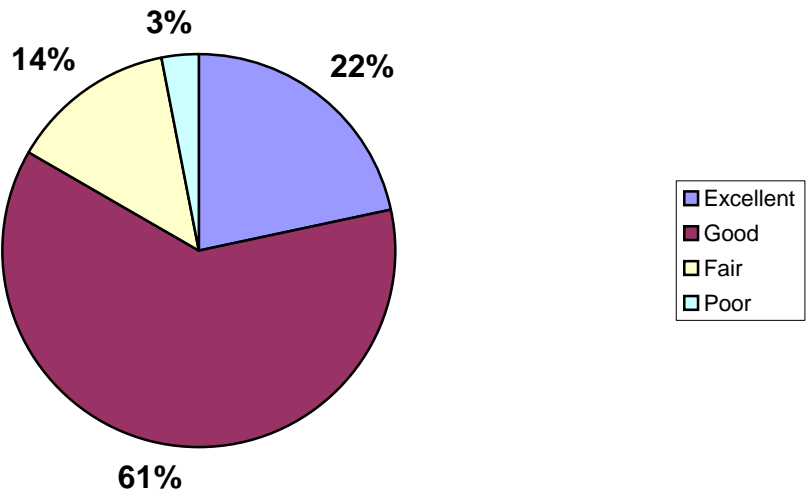


# The Training Department

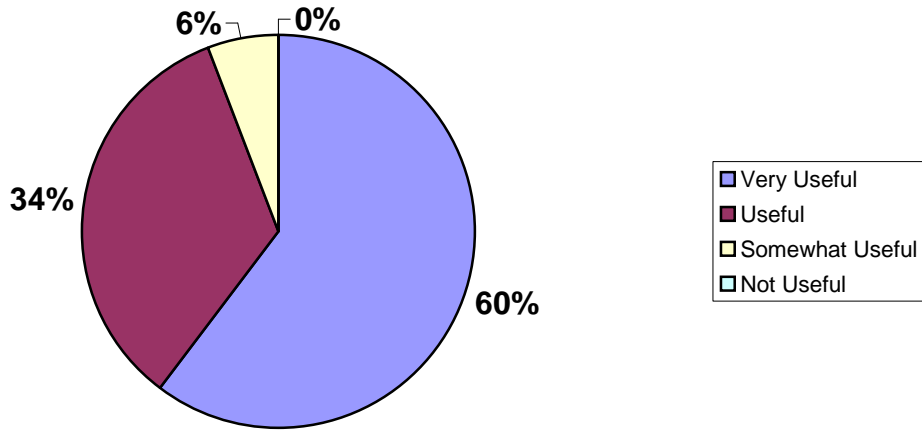
## Experience With Career Ladder Training



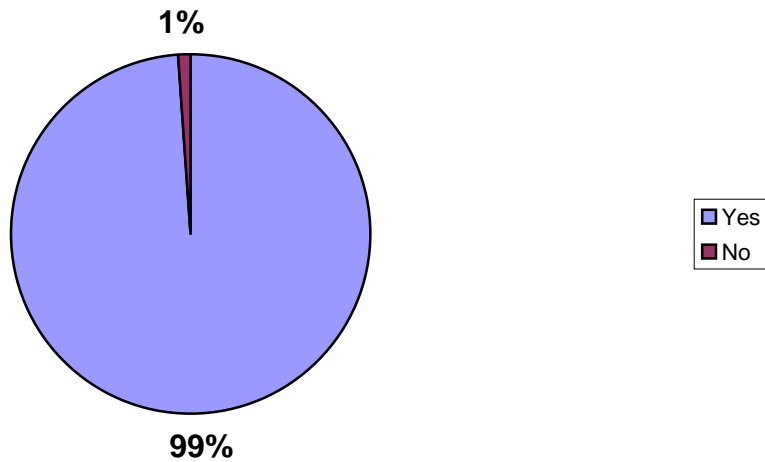
## Training Locations



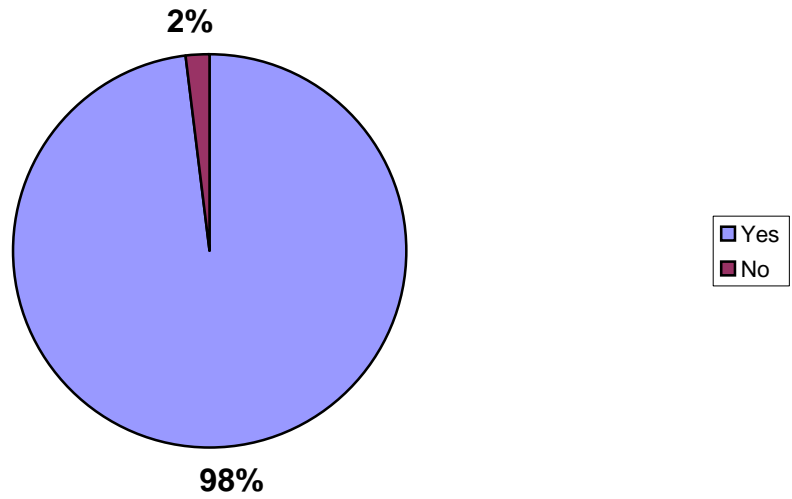
### Usefulness of Career Ladder Courses



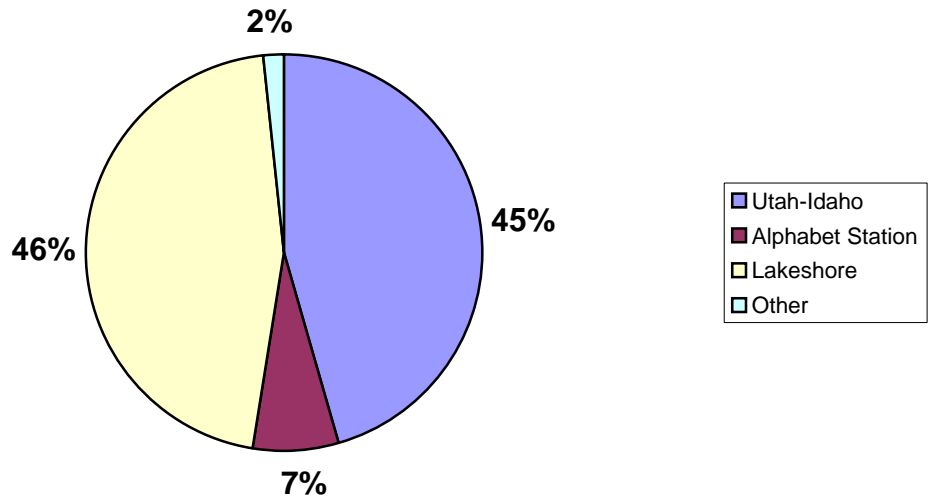
### Are The CCR&R Trainers Skilled & Knowledgeable in Their Presentations?



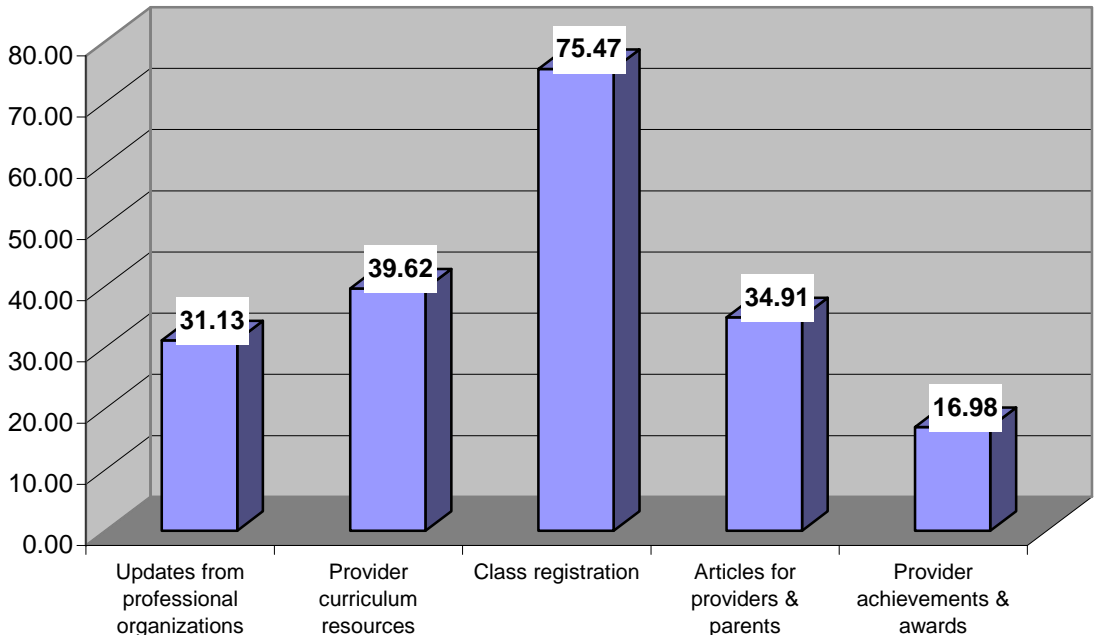
### Is The \$10 Utah Idaho Certificate Useful?



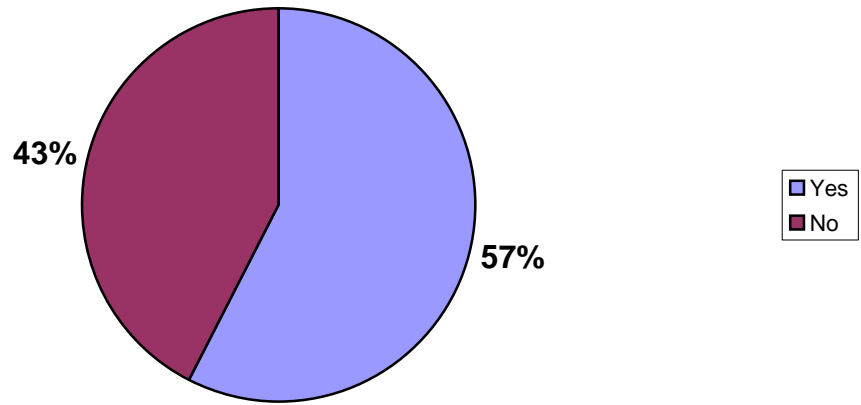
### Which Location Do You Prefer For The \$10 Certificate?



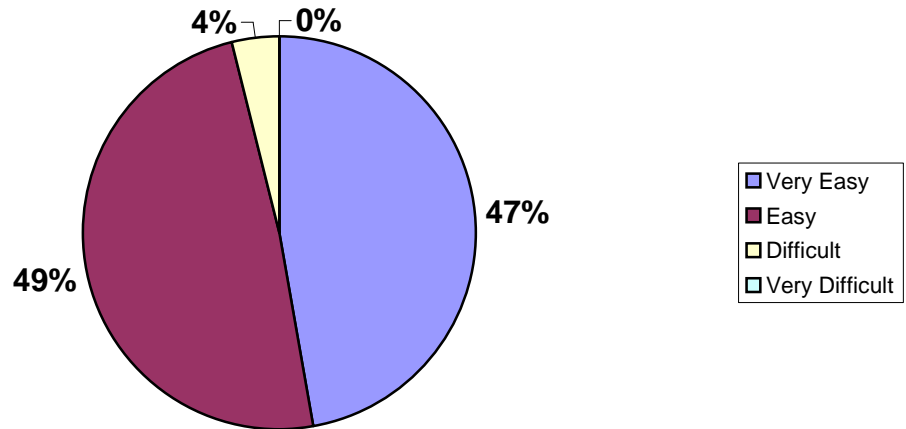
### Most Helpful Parts of The Quarterly Provider Newsletter



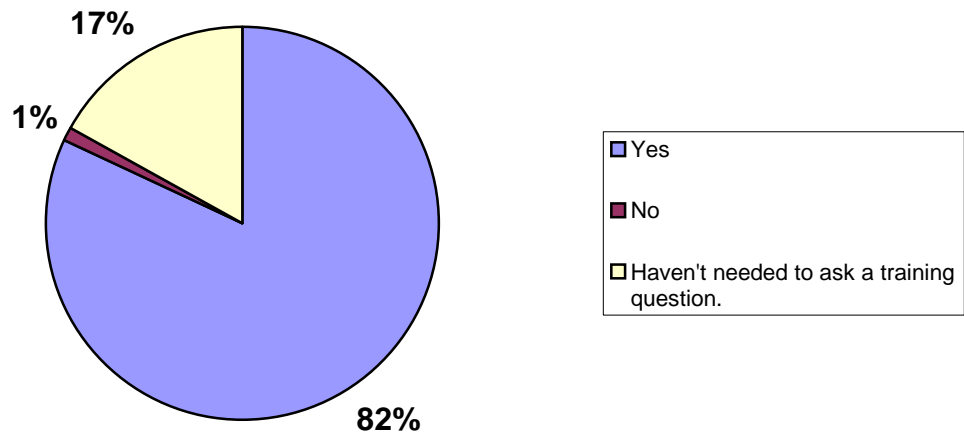
### Have You Accessed Training Info Online?



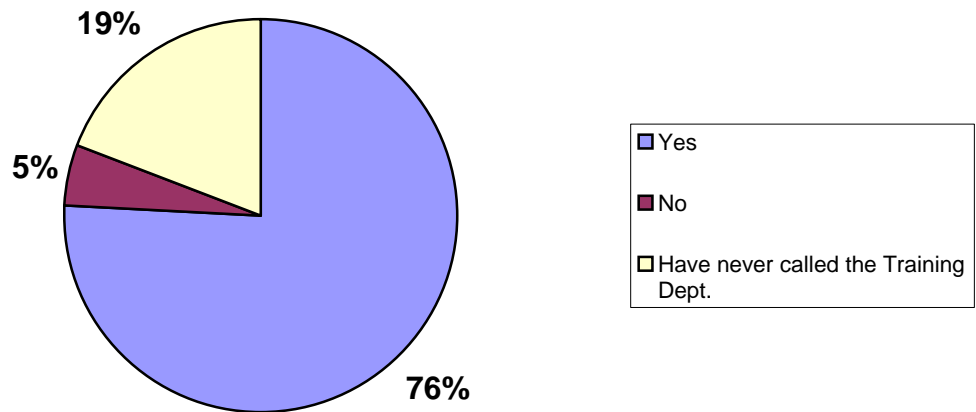
### Class Registration Process



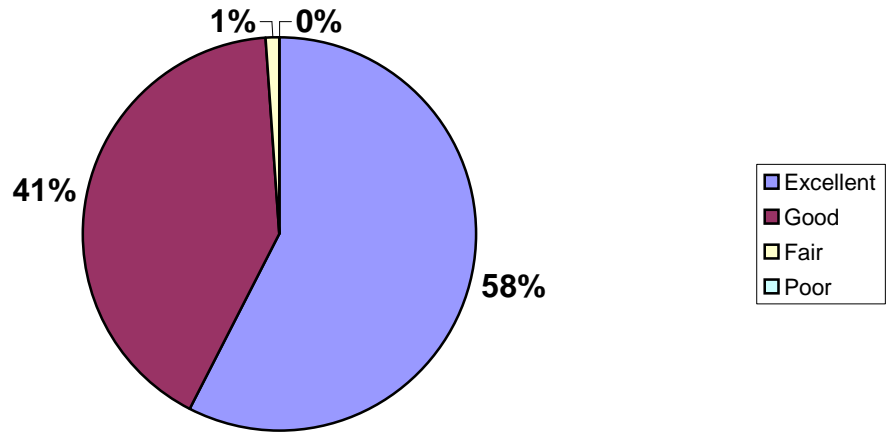
### Did The Training Rep Answer All Your Questions?



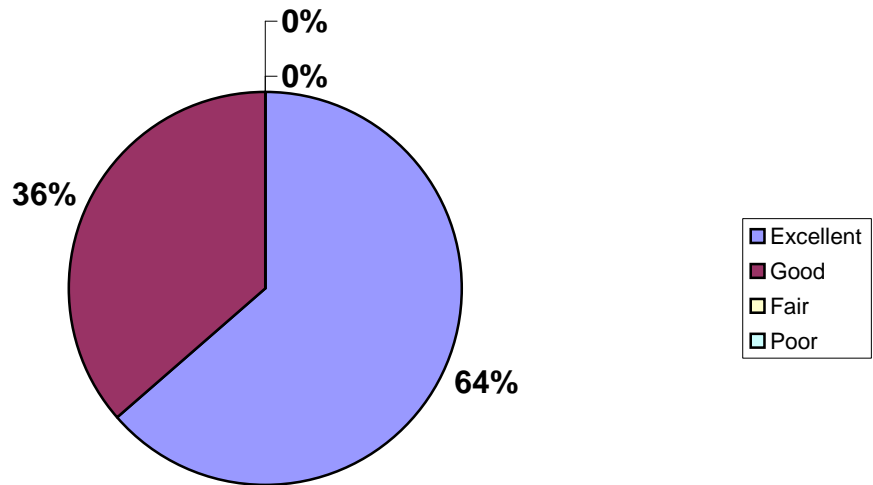
### Were Your Phone Call Returned Within 24 Hours?



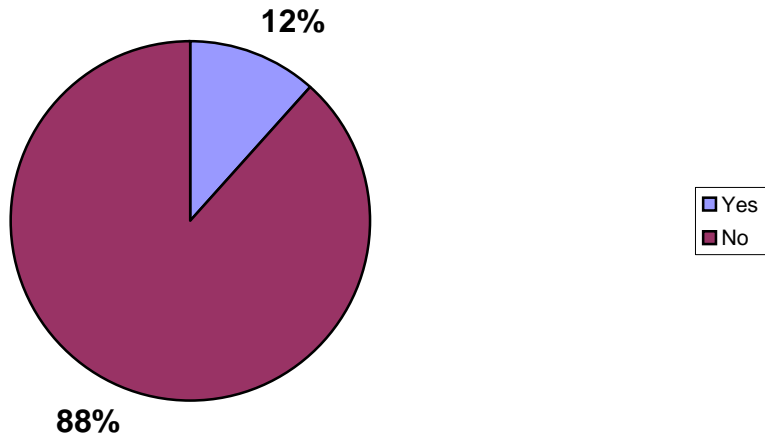
### Contact With Training Rep



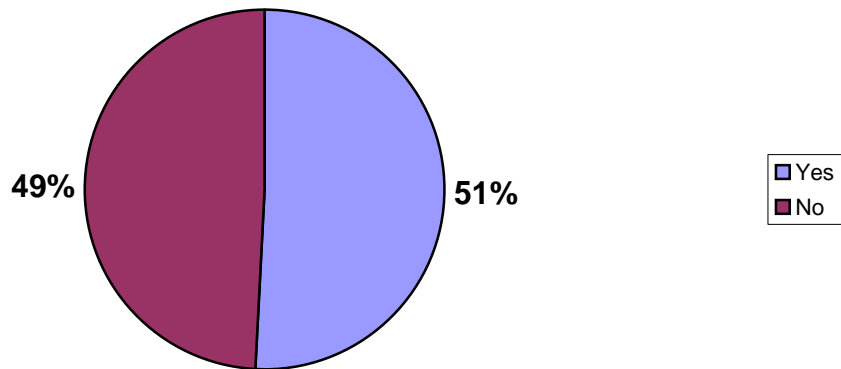
### Training Rep's Knowledge of Program



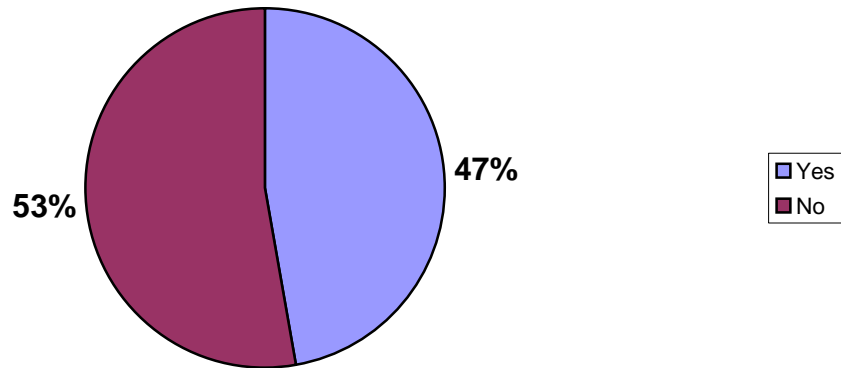
**Would Classes Held Mon-Fri Between 8:00am & 5:00pm  
Be More Convenient?**



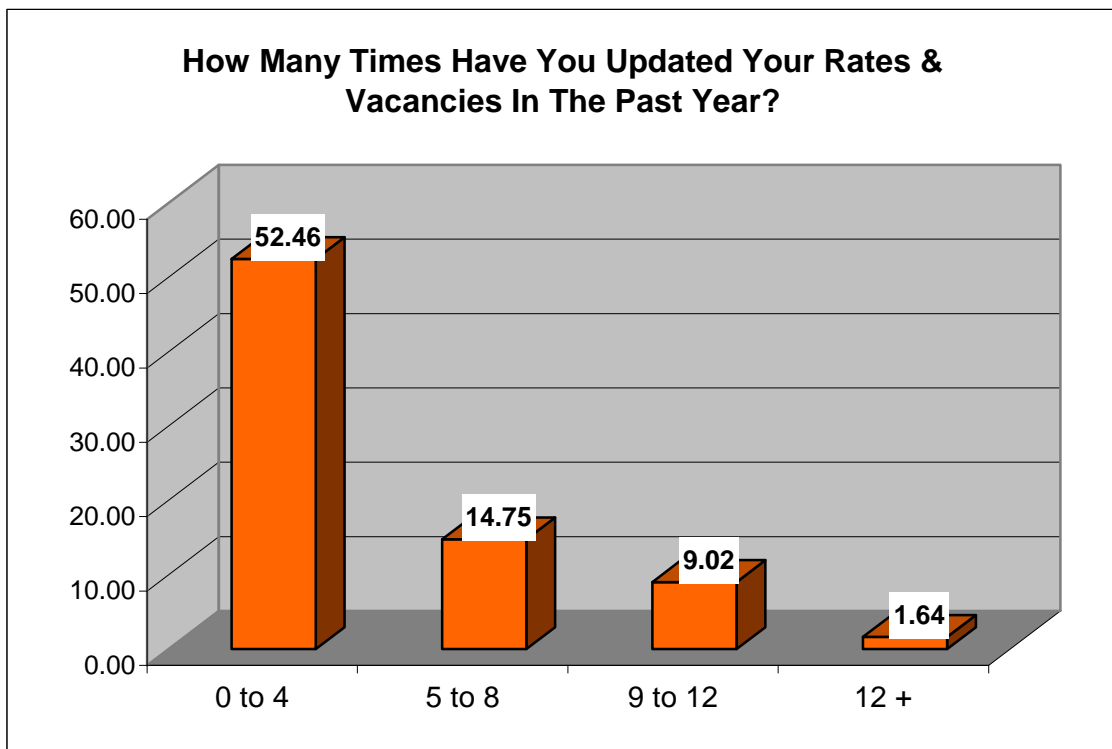
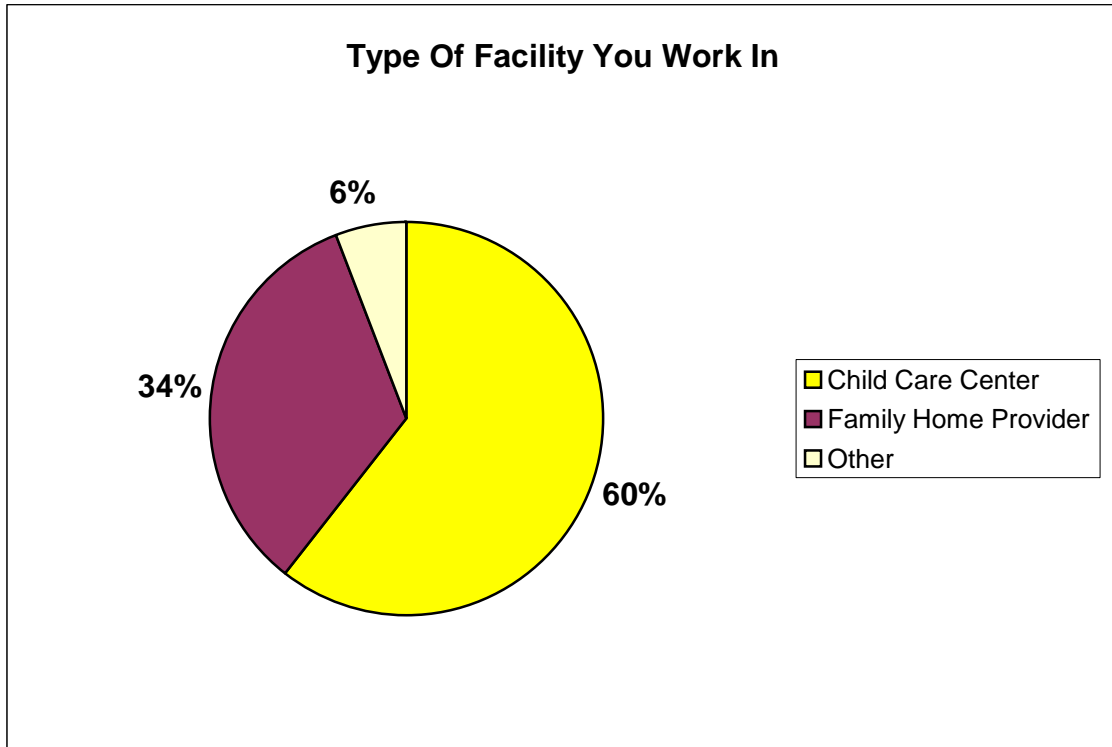
**Have You Accessed Training Info On The Statewide  
Training Registry?**

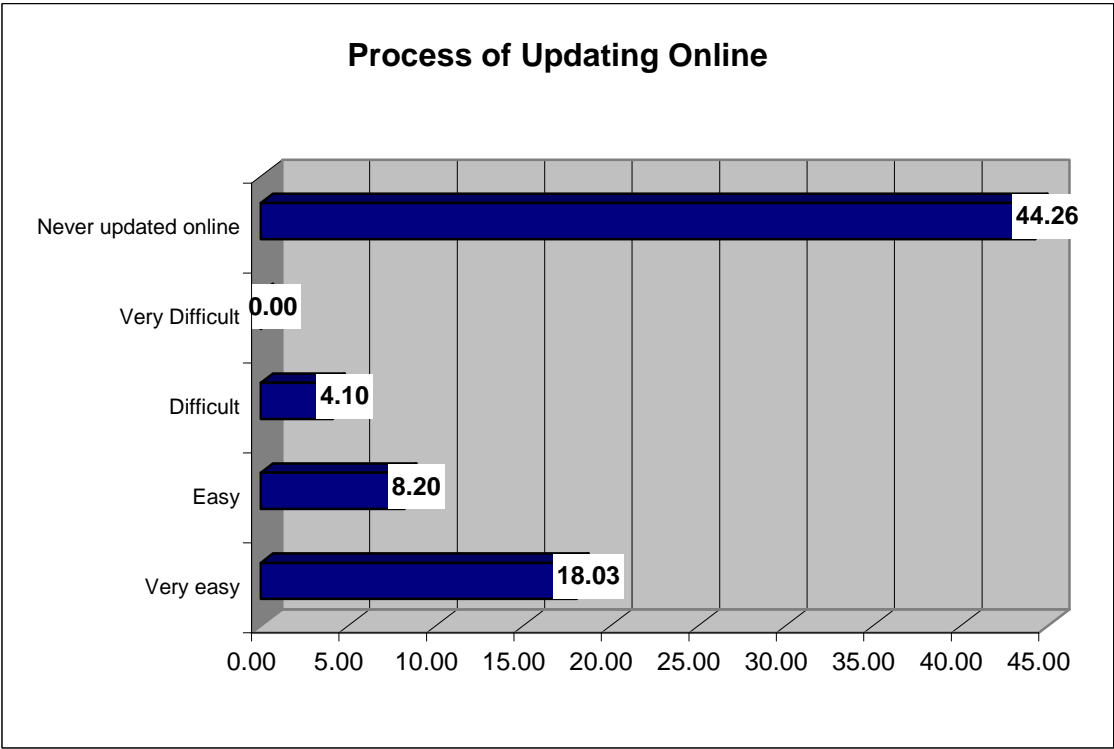
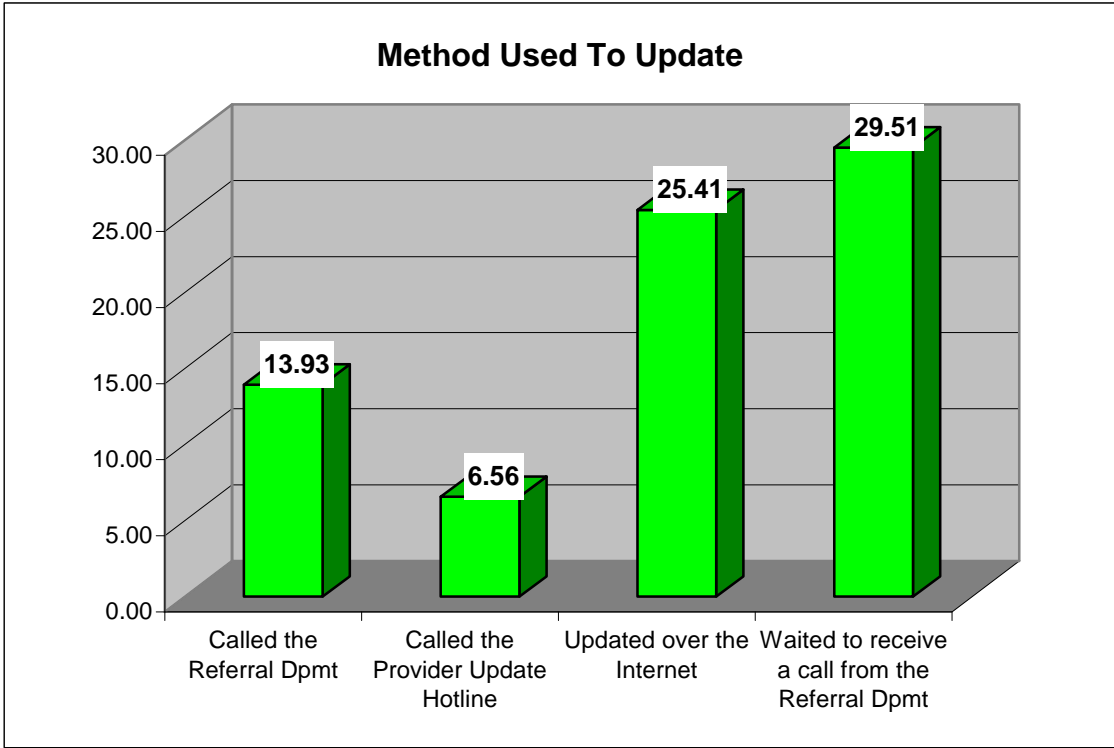


**Have You Accessed Your Personal Training History On  
The Training Registry?**

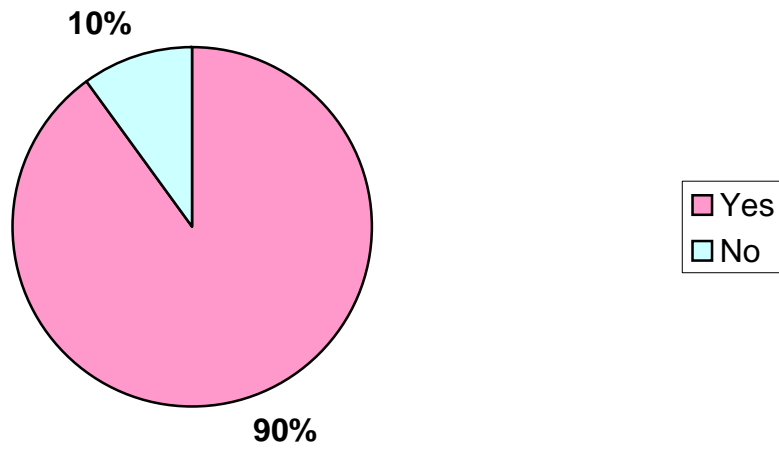


# The Referral Department





**Is It Easy To Reach A Representative In The Referral Department?**



**How Satisfied Were You With The Resolution Of Your Question Or Concern After Speaking With a Referral Specialist?**

